

# THE INVASIVE *SINANODONTA WOODIANA* (BIVALVIA: UNIONIDAE) CONTINUES TO SPREAD IN NORTH AFRICA (ALGERIA): A NEW LOCALITY FOR AN ESTABLISHED POPULATION AND FURTHER PERSPECTIVES

LAMIA BENSÂÂD-BENDJEDID<sup>1\*</sup>, SALAH TELAILIA<sup>2</sup>, LAMIA BOUTABIA<sup>2</sup>, SAMIR ROUIDI<sup>1</sup>,  
RAOUF ZAIDI<sup>2</sup>, FADIA BABA-AHMED<sup>3</sup>

<sup>1</sup> CNRDPA, National Center for Research and Development of Fisheries and Aquaculture, Algeria  
(e-mail: [lamiabendjedid@gmail.com](mailto:lamiabendjedid@gmail.com));  LB-B <https://orcid.org/0000-0001-7719-1026>

<sup>2</sup> Faculty of Natural and Life Sciences, Laboratory of Agriculture and Ecosystem Functioning,  
Department of Agronomy Sciences, Chadli Bendjedid University, Algeria

<sup>3</sup> Department of Biology, Chadli Bendjedid University, Algeria

\* corresponding author

**ABSTRACT:** Native to Eastern Asia, the Chinese Pond Mussel (*Sinanodonta woodiana*) (Mollusca: Bivalvia) is one of the most threatening invaders of freshwater habitats worldwide. Algerian waters are no exception. In 2023, the mussel was discovered in two locations, one of which is a protected area. Here, we report Babar Dam reservoir as a new site of its occurrence and the southernmost record of the species in the country. The present survey was conducted in May 2023 and included a set of live *S. woodiana* specimens in variable sizes (from 95.4 to 210.4 mm) and developmental stages (from 4 to 11 years old), which suggests that the species succeeded in establishing a sustainable population that can spread and colonise new territories. The possible pathway of introduction of the Chinese Pond Mussel and its occurrence in the whole country are discussed. Overall, the spread of *S. woodiana* in Algeria appears to be seriously underestimated and overlooked; it is crucial to establish a monitoring plan to manage the species' progress and assess its impact on recipient ecosystems and indigenous communities.

**KEY WORDS:** Algeria; Babar Dam reservoir; Chinese Pond Mussel; dispersal; introduction pathway

## INTRODUCTION

The study of biological invasions is essential not only to assess their environmental impacts and economic costs but also to understand their biogeographic processes, such as long-distance dispersal, rapid adaptation, and range expansion (VIARD et al. 2016). Thus, it is crucial to acquire the most up-to-date information regarding their invasiveness beyond their native range (ULMAN et al. 2017, PAGANELLI et al. 2021).

The large unionid Chinese Pond Mussel *Sinanodonta woodiana* (Lea, 1834) (Mollusca: Bivalvia) is one of the most invasive alien macro-invertebrates

worldwide (COLOMBA et al. 2013, PAGANELLI et al. 2021). Originally from Yangtze basin and southern China (KONDAKOV et al. 2018, KONEČNÝ et al. 2018, DOUDA et al. 2024). This freshwater bivalve has, during the last 50 years, expanded its range at an increasing pace throughout Europe (KRASZEWSKI 2007 and literature therein, KONEČNÝ et al. 2018, SPYRA et al. 2016, HUBER & GEIST 2019, URBANŠKA et al. 2021), Asia (KONDAKOV et al. 2020a, 2020b, BOLOTOV et al. 2022), and more recently, Africa (MABROUKI & TAYBI 2022, BENSÂÂD-BENDJEDID et al. 2023). It is commonly assumed that the release of host fish bearing



the mussel's larval glochidia during fish stocking is often the principal pathway of its dispersal into new aquatic habitats (SÁRKÁNY-KISS et al. 2000, DOUDA et al. 2012, SPYRA et al. 2016, URBANŠKA et al. 2021, DOBLER et al. 2022), in addition to releases from pet shop trade which seems to be a problem in parts of Europe (BENEDICT et al. 2024).

However, the broad tolerance of *S. woodiana* to environmental conditions (variety of substrates, extreme climatic conditions, hypoxia and eutrophication) and its high resistance to anthropogenic impacts (pollution, habitat degradation and fragmentation) associated with remarkable morphological plasticity, a high degree of fecundity, and an indeterminate growth pattern, make *S. woodiana* a successful invader (DUDGEON & MORTON 1983, KRASZEWSKI 2007, GUARNERI et al. 2014, SOUSA et al. 2014, LABECKA & DOMAGALA 2018, LABECKA & CZARNOLESKI 2021, BENEDICT & GEIST 2021, URBANŠKA et al. 2021, DOBLER et al. 2022, GEIST et al. 2023). Once the species has been introduced, it can outcompete native mussels by its greater reproductive output compared to native mussel species (HUBER & GEIST 2019, LABECKA & CZARNOLESKI 2021). As a consequence, it is assumed that its spread outside its native range has dramatic effects on local fauna, resulting in a decline or total replacement of indigenous anodontine species (NAJBEREK et al. 2011, BENKÓ-KISS et al. 2013, CILENTI et al. 2019, KARAOUZAS et al. 2022, GEIST et al. 2023).

In Algeria, to date, the only documented records of the Chinese Pond Mussel have been reported by BENSAAËD-BENDJEDID et al. (2023) and BELKACEM et al. (2023) in the UNESCO Biosphere Reserve Oubeira Lake and Beni Haroun Dam reservoir, respectively. These authors agreed that, at both sites, *S. woodiana* was most likely involuntarily introduced along with Asian carp fingerlings imported from Central Europe. Furthermore, due to the species'

high level of invasiveness and the broad interconnection of hydrographic systems, BENSAAËD-BENDJEDID et al. (2023) and DOUDA et al. (2024) predicted new reports of *S. woodiana* presence at a regional scale in North Africa.

Babar Dam (District of Khenchela) located in the eastern part of the Saharan Atlas, is one of the most important hydraulic structures exploited for agriculture and tourism development in Northeast Algeria (GAAGAI 2017). Built in a semi-arid region at an altitude of more than 1000 m, the dam is primarily used for water supply for domestic purposes as well as to irrigate thousands of hectares of farmland (TEBBI et al. 2018, GAAGAI et al. 2020a). In the context of a broad national strategy for aquaculture development (1985–2009), Babar Dam reservoir was subject, along with more than twenty other sites, to the release of approximately 6 million silver (*Hypophthalmichthys molitrix*) and bighead carp (*Aristichthys nobilis*) juveniles imported from Hungary (MEDDOUR et al. 2010, SERIDI 2011, KARA 2012). Nevertheless, by the 2000s, several scientists began to warn against the adverse environmental consequences of the introductions of exotic Cyprinidae, as the latter have been found to be vectors for the spread of numerous pests and pathogens across Algerian aquatic ecosystems (MEDDOUR et al. 2005, 2010, KARA 2012, KHELIFI et al. 2018, BENSAAËD-BENDJEDID et al. 2023). This contribution is one further piece of evidence for these findings. In this paper, we report Babar Dam reservoir as a new site for the occurrence of the invasive Chinese Pond Mussel and the southernmost record of the species in the country's inland waters. Additionally, we present a preliminary characterisation of the species population status at the study site and discuss the possible introduction pathway as well as the potential distribution of *S. woodiana* throughout the entire Algerian territory.

## MATERIALS AND METHODS

### STUDY AREA

Babar Dam (Fig. 1) (altitude: 1,109 m; capacity: 38,000,000 m<sup>3</sup>; watershed surface area: 571 km<sup>2</sup>) is situated in Northeast Algeria (35°10'20.4"N, 7°01'46.1"E), between the Aurès and Nemencha mountains, at the extreme eastern limits of the Saharan Atlas (GAAGAI 2017, TEBBI et al. 2018, ACHOUR et al. 2019). This hydraulic structure was constructed in 1989, a few kilometers from the city of Khenchela to retain the waters of the El Arab River, which is included in the catchment area of Chott Melghir (Ramsar site no. 1296), a large complex of seasonal salt lakes and freshwater pools rep-

resentative of arid and hyper-arid Saharan environments (TEBBI et al. 2018, KOUSSA & BOUZIANE 2019, GAAGAI et al. 2020a). Babar reservoir has an arid/semi-arid climate and is characterised by low-turbidity water, which ranges in temperature from 7 to 32 °C; the pH is slightly alkaline, near neutrality (ACHOUR et al. 2019, GAAGAI et al. 2020b).

### BIOLOGICAL SAMPLING AND DATA PROCESSING

*S. woodiana* was discovered in Babar Dam reservoir (Fig. 2) on May 2023, during a field survey of the wildlife and avifauna in the semi-arid wetlands

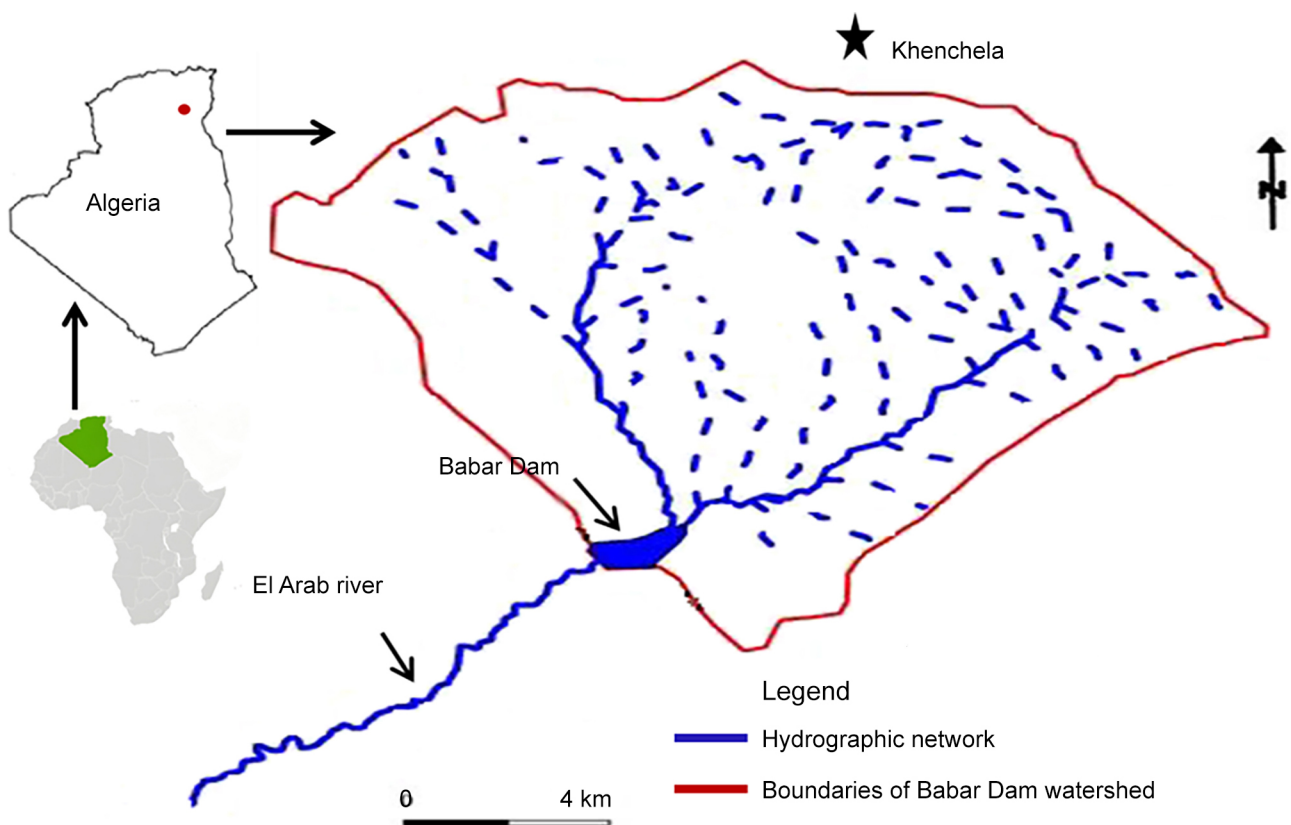


Fig. 1. Location map: Babar Dam and its hydrographical network (modified from [GAAGAI 2017](#))



Fig. 2. View of Babar reservoir during the field trip (5 May 2023)



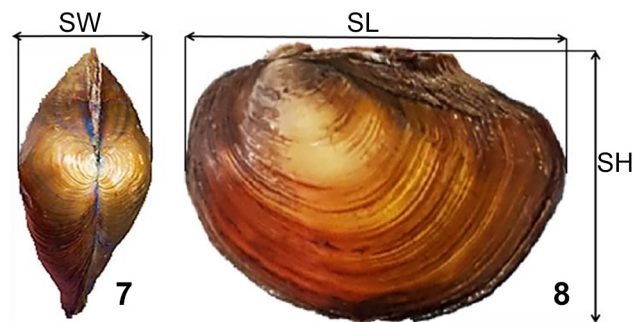


Figs 3–6. *Sinanodonta woodiana* from Babar reservoir: 3 – live mussels; 4 – empty shell of *S. woodiana*; 5 – external and internal views of the shell (SL = 147.3 mm); 6 – details of umbonal sculptures (SW = 66.1 mm)

of eastern Algeria. The mussels were easily found along the reservoir's banks and manually gathered at depths of 0 to 30 cm (Figs 3–6). Only live specimens were photographed and processed. Bivalves were measured (mm) along their maximum shell length (SL), width (SW), and height (SH) (Figs 7–8) with a digital calliper to the nearest 0.1 mm. To obtain individual total body mass (BW), mussels were wiped with absorbent paper and then accurately weighted (g) using a digital scale with a precision of 0.01 g. The species identification was based on a combination of diagnostic criteria, including the external shell colour (ranging from light brown to dark brown and black), internal shell colour (pinkish-white), and form (wide, rounded, swollen, thin, and fragile), the sculpture of the umbo (4–8 prominent, spaced, sub-concentric or slightly transverse ripples) and hinge features (absence of teeth) (GIRARDI & LEDOUX 1989, KISS 1995, POPA et al. 2007, ADAM 2010, ZIERITZ et al. 2012, COLOMBA et al. 2013).

The population structure of *S. woodiana* from Babar Dam was determined from total shell length (SL) ac-

cording to the method of AFANASJEV et al. (2001) and SPYRA et al. (2012), through the classification of mussels into four size groups: young (< 50 mm), small ( $50 \leq SL \leq 100$  mm), medium ( $100 < SL \leq 150$  mm) and large ( $SL > 150$  mm). The age of each sampled individual was estimated by counting the surface annual growth rings. The statistical analysis was performed using Excel 2010 (Microsoft Office) software.



Figs 7–8. Measured characters in *S. woodiana* from Babar reservoir (7 – dorsal view of both valves, 8 – external view of left valve)

Additionally, data mining research on social networks (iNaturalist and Facebook) combined with a literature survey allowed us to broaden the scope of our study and present *S. woodiana*'s potential introduction pathway and distribution in Algeria. We collected as much data as possible on recent confirmed

records as well as the alleged finds of the species reported by amateur naturalists and fishermen. Once analysed, a scenario for new range-extending records of the Chinese Pond Mussel in Algerian inland water has been elaborated.

## RESULTS AND DISCUSSION

Within the framework of this study, the total sample included 34 live Chinese Pond Mussel specimens. Basic statistics for shell dimensions and body weights of *S. woodiana* from Babar Dam are detailed by size classes in Table 1. Total shell length and body mass ranged between 95.4 and 210.4 mm and from 85.38 to 803.9 g, respectively. Comparing our data with the previous records of this species in Africa, it appears that the maximum shell length obtained for the mussels in the study site exceeded the sizes reported from Algeria: Oubeira Lake (183.55 mm, BENSÂD-BENDJEDID et al. 2023) and Beni Haroun Dam (167 mm, BELKACEM et al. 2023) as well as in Morocco: Al Kansra Dam (170 mm, MABROUKI & TAYBI 2022). However, it remained lower than that observed in some invaded European water bodies where *S. woodiana* shells have reached 250–270 mm (KRASZEWSKI & ZDANOWSKI 2007, LAJTNER & CRNČAN 2011, DOBLER et al. 2022). Several authors attributed intraspecific differences in the growth of the Chinese Pond Mussel populations to environmental factors, especially water temperature (SOROKA 2000, KRASZEWSKI 2006, SPYRA et al. 2016). For instance, in Poland, according to KRASZEWSKI & ZDANOWSKI (2007), the species reaches maximum shell length (above 200 mm) in anthropogenically heated lakes rather than moderately warm waters. Furthermore, KISS (1995) noted that during hot summer periods, the growth rate of *S. woodiana* may be twice as fast as during the cold winter months. In Babar Dam, the upper water temperature limit exceeds 30 °C with an annual mean of about 17 °C (GAAGAI et al. 2020b), which provides the optimum thermal conditions described for the species (KRASZEWSKI & ZDANOWSKI 2001, DEMAYO et al. 2012), and might explain its establishment and remarkable development. Indeed,

except for the younger mussels (5 cm), all size classes of *S. woodiana* were present in Babar Reservoir. Large specimens constituted the highest proportion, while the medium-sized mussel class was second in terms of abundance (Table 1). On the other hand, the age structure of the sampled bivalves was formed into eight groups ranging from 4 to 11 years old (Fig. 9). Six- and seven-year-old mussels dominated the analysed population. These findings suggest that at the study site, *S. woodiana* has successfully established a stable and naturalized population capable of sustaining itself. According to several authors, the presence of individuals of various sizes and ages indicates the adaptation of the Chinese Pond Mussels to the invaded ecosystem conditions and their ability to grow and reproduce there (SOROKA 2000, CAPPELLETTI et al. 2009, URBANŠKA et al. 2012, KAMBURSKA et al. 2013).

Concerning the potential introduction pathway and distribution of *S. woodiana* in Algeria, by referring to BENSÂD-BENDJEDID et al. (2023) and BELKACEM et al. (2023), the Chinese Pond Mussel

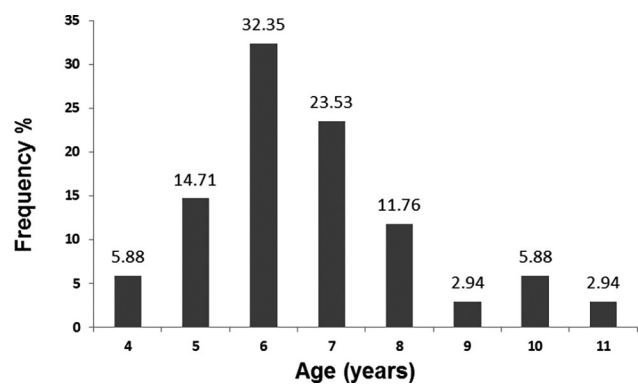


Fig. 9. Age composition of *S. woodiana* from Babar reservoir

Table 1. Summary statistics on measured parameters in various size classes of *S. woodiana* from Babar reservoir

Size class	N = 34	SL (mm)		SH (mm)		SW (mm)		BW (g)	
		min	max	min	max	min	max	min	max
Small	3	95.4	97.1	61.96	64.20	36.9	37.2	85.38	97.11
Medium	6	117.9	148.3	72.80	99.01	44.1	66.4	179.00	411.03
Large	25	152.3	210.4	96.40	132.00	57.0	77.8	367.91	803.90
Mean ± SE		164.48 ± 5.15		104.88 ± 3.08		63.03 ± 1.76		490.33 ± 33.49	

N – number of specimens, Min – minimum value, Max – maximum value, SE – standard deviation, SL – shell length, SH – shell height, SW – shell width, BW – body weight





was most likely unintentionally introduced as glochidia (obligatory parasitic larval stage) hosted by farmed Asian carp species (*Hypophthalmichthys molitrix*, *Aristichthys nobilis*) imported from Hungary and widely released in Algerian inland waters within the framework of a broad national program for aquaculture development established between 1985 and 2009. This assumption appears well-founded and justified, even though verification by genetic methods is necessary. In fact, Hungary has been proven to be the starting spot, along with Romania, for the spread of *S. woodiana* across the European continent (WATTERS 1997, KRASZEWSKI & ZDANOWSKI 2001, URBANŠKA et al. 2012, KONEČNÝ et al. 2018, DOUDA et al. 2024, MEHLER et al. 2024). In addition, to date, the three locations where the species was confirmed, namely Oubeira Lake (BENSAÂD-BENDJEDID et al. 2023), Beni Haroun (BELKACEM et al. 2023), and Babar (present study) Dam reservoirs, were all subjects of intensive introductions of exotic carp fry produced in Hungarian hatcheries (Algerian

Ministry of Fisheries and Fish Resources in SERIDI 2011). Furthermore, *S. woodiana* was also anecdotally reported by fishers and amateur naturalists in numerous water bodies across the country. Even though these alleged occurrences should be checked and the species formally identified, it is significant that the common thread between these sites is that they have hosted at least one stocking event during the period mentioned above (Table 2). Based on this, we hypothesize that *S. woodiana* is probably prevalent in most water bodies where non-autochthonous fishes imported from Hungary were released. Under this scenario, we identified 22 locations as recipient habitats for the species. Figure 10 summarises the current and alleged localities of the Chinese Pond Mussel in Algerian water bodies. If our assumption is correct, we estimate that, given the significant invasive potential of the Chinese pond mussel and the broad interconnection of hydrographic systems (Fig. 10) its distribution in Algeria is underestimated and probably wider than our study data suggest.

Table 2. History of fish stocking events related to the importation of fingerlings from Hungarian hatcheries (Algerian Ministry of Fisheries and Fish resources in SERIDI 2011)

No	Site name	Geographic coordinates		Fish stocking events		<i>S. woodiana</i> occurrence
		Latitude	Longitude	Number	Year	
1	Oubeira Lake	36°50'50"N	08°23'03"E	2	1985–1991	Confirmed
2	Beni Haroun Dam	36°32'33"N	06°16'04"E	1	2006	Confirmed
3	Babar Dam	35°10'20"N	07°01'46"E	2	2001–2006	Confirmed
4	Cap Djinet Dam	36°51'01"N	03°43'52"E	1	1986	No data (Probable)
5	K'sob Dam	35°50'08"N	04°33'59"E	2	1985–2006	No data (Probable)
6	Merdjet S. Abed Dam	36°00'38"N	00°59'42"E	3	1985–1991– 2001	No data (Probable)
7	Gargar Dam	35°54'48"N	01°00'22"E	3	1991–2001–2006	No data (Probable)
8	Ain Zada Dam	36°09'12"N	05°09'33"E	2	2001–2006	No data (Probable)
9	Hammam Debagh Dam	36°28'16"N	07°13'33"E	3	2001–2004–2006	No data (Probable)
10	Boukourdane Dam	36°31'23"N	02°17'53"E	3	2001–2003–2006	No data (Probable)
11	Taksebt Dam	36°40'22"N	04°07'16"E	4	2002–2003–2005–2006	No data (Probable)
12	Foum el Gherza Dam	34°51'32"N	05°55'30"E	2	2004–2006	No data (Probable)
13	Fontaine des Gazelles Dam	35°07'40"N	05°35'15"E	2	2004–2006	No data (Probable)
14	Ighil Emda Dam	36°28'09"N	05°15'52"E	2	2005–2006	No data (Probable)
15	Cheffia Dam	36°37'19"N	08°03'29"E	3	1985–2005–2006	Reported not confirmed yet
16	Oum Toub Dam	36°42'08"N	06°37'16"E	3	2001–2004–2006	Reported not confirmed yet
17	Timgad Dam	35°31'35"N	06°31'10"E	1	2006	Reported not confirmed yet
18	Djorf Torba Dam	31°30'39"N	02°46'18"E	1	2006	Reported not confirmed yet
19	El Agram Dam	36°43'12"N	05°48'56"E	2	2005–2006	Reported not confirmed yet
20	Ghrib Dam	36°08'28"N	02°33'44"E	4	2001–2002–2004–2006	Reported not confirmed yet
21	Bouroumi El Mostakbal Dam	36°21'23"N	02°33'27"E	2	2001–2004	Reported not confirmed yet
22	Ain Delia Dam	36°15'34"N	07°50'14"E	2	2001–2006	Reported not confirmed yet

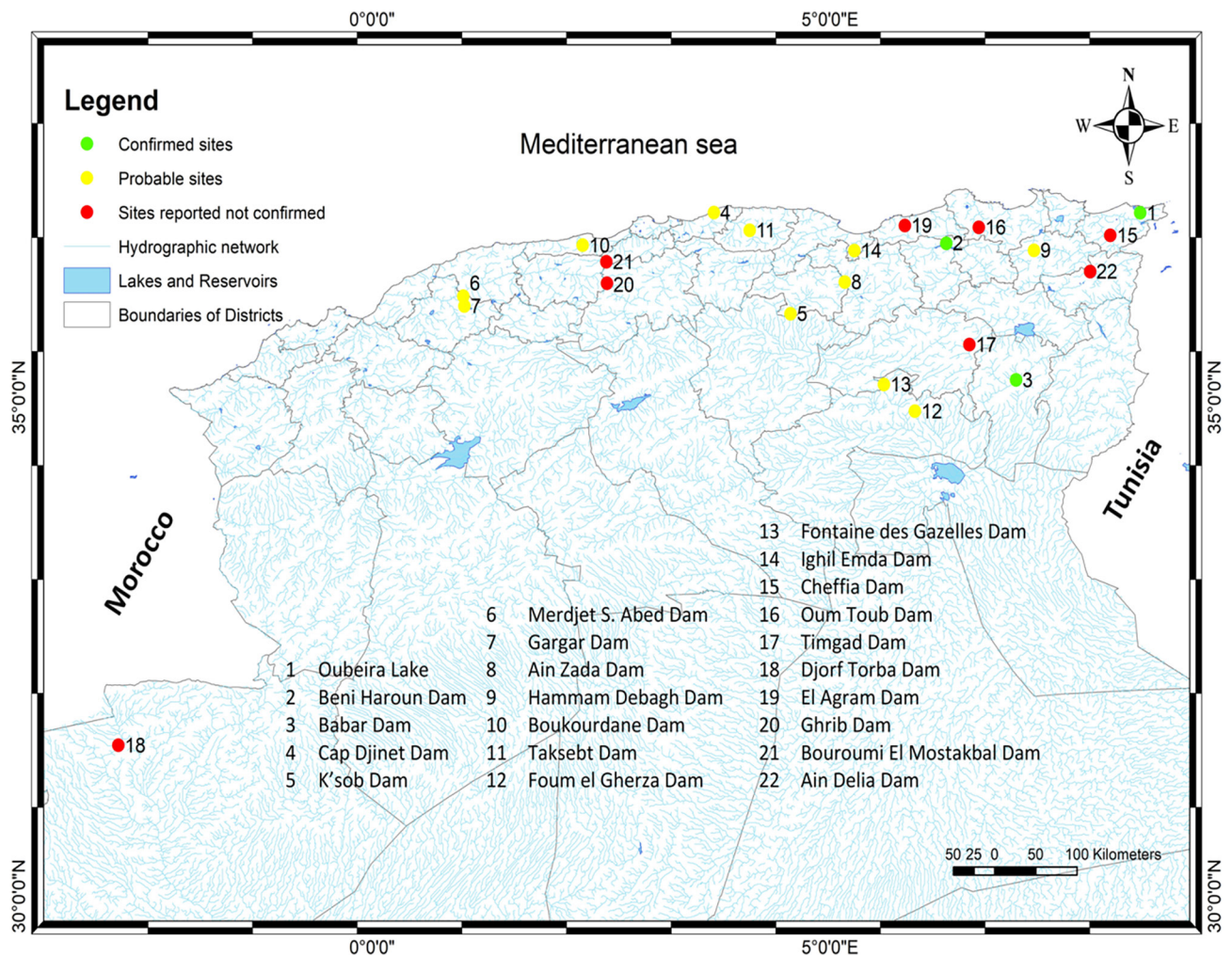


Fig 10. Occurrence of *S. woodiana* in Algerian fresh waters

## CONCLUSION

In Algeria, ecological and biological studies of *S. woodiana* have just started; the species was probably introduced a long time ago, although it was only first reported in 2023. Investigating *S. woodiana*'s distribution, population dynamics, reproduction potential, and habitat preferences as quickly as possible is crucial and highly advised since these are the key that will determine the level of the mussel's impact on Algerian-invaded ecosystems and serve as a starting

point for establishing a management strategy to deal with its presence and prevent further spreading.

## ACKNOWLEDGEMENTS

We express our sincere gratitude to the anonymous reviewers and the associate editor for their time spent on reviewing our manuscript, and their constructive comments.

## REFERENCES

- ACHOUR S., MODJAD H., HELLAL H., KELILI H. 2019. Essais d'optimisation des procédés de clarification et de désinfection d'eaux de barrage de la région de Khenchela (Est Algérien). Larhyss Journal 37: 151–174.
- ADAM B. 2010. L'Anodonte chinoise *Sinanodonta woodiana* (Lea, 1834) (Mollusca, Bivalvia, Unionidae): une espèce introduite qui colonise le bassin Rhône-Méditerranée. MalaCo 6: 278–287.
- AFANASJEV S. A., ZDANOWSKI B., KRASZEWSKI A. 2001. Growth and population structure of the mussel *Anodonta woodiana* (Lea, 1834) (Bivalvia, Unionidae) in the heated Konin lake system. Archives of Polish Fisheries 9: 123–131.





- BELKACEM Y., SOUMANI K., BELHOUCHECHET N., TAOUCHECHET L. 2023. The occurrence of the Chinese *Sinanodonta woodiana* (Lea, 1834) (Mollusca Bivalvia Unionidae) in Algerian dams. *Biodiversity Journal* 14: 385–390.  
<https://doi.org/10.31396/biodiv.jour.2023.14.2.385.390>
- BENEDICT A., GEIST J. 2021. Effects of water temperature on glochidium viability of *Unio crassus* and *Sinanodonta woodiana*: implications for conservation, management and captive breeding. *Journal of Molluscan Studies* 87(2): eyab011.  
<https://doi.org/10.1093/mollus/eyab011>
- BENEDICT A., KUEHN R., STOECKLE B. C., GEIST J. 2024. Genetic comparisons of the invasive pond mussel *Sinanodonta woodiana* from wild and pet shop populations in Germany. *Hydrobiologia* 851: 2125–2137.  
<https://doi.org/10.1007/s10750-023-05442-w>
- BENKŐ-KISS Á., FERINCZ Á., KOVÁTS N., PAULOVITS G. 2013. Spread and distribution pattern of *Sinanodonta woodiana* in Lake Balaton. *Knowledge and Management of Aquatic Ecosystems* 408: 09.  
<https://doi.org/10.1051/kmae/2013043>
- BENSAÂD-BENDJEDID L., TELAILIA S., ALLIOUCHE F., TOUATI H., LADJAMA I. 2023. First record of the occurrence of the Chinese pond mussel *Sinanodonta woodiana* (Lea, 1834) (Bivalvia: Unionidae) in African freshwaters: Oubeira Lake, Algeria. *Turkish Journal of Zoology* 47: 94–102.  
<https://doi.org/10.55730/1300-0179.3119>
- BOLOTOV I. N., KONOPLEVA E. S., CHAN N., LUNN Z., WIN T., GOFAROV M. Y., KONDAKOV A. V., TOMILOVA A. A., VIKHREV I. V. 2022. A riverine biodiversity hotspot in northern Myanmar supports three new and narrowly endemic freshwater mussel species. *Aquatic Conservation: Marine and Freshwater Ecosystems* 32: 1490–1508.  
<https://doi.org/10.1002/aqc.3850>
- CAPPELLETTI C., CIANFANELLI S., BALTRAMI M. E., CIUTTI F. 2009. *Sinanodonta woodiana* (Lea, 1834) (Bivalvia: Unionidae) a new nonindigenous species in Lake Garda (Italy). *Aquatic Invasions* 4: 685–688.  
<https://doi.org/10.3391/ai.2009.4.4.15>
- CILENTI L., MANCINELLI G., SCIROCCO T., SPECCHIULLI A. 2019. First record of *Sinanodonta woodiana* (Lea, 1834) in an artificial reservoir in the Molise region, Southeast Italy. *BioInvasions Records* 8: 330–328.  
<https://doi.org/10.3391/bir.2019.8.2.14>
- COLOMBA M. S., LIBERTO F., REITANO A., GRASSO R., DI FRANCO D., SPARACIO I. 2013. On the presence of *Dreissena polymorpha* Pallas, 1771 and *Sinanodonta woodiana woodiana* (Lea, 1834) in Sicily (Bivalvia). *Biodiversity Journal* 4: 571–580.
- DEMAYO C. G., CABACABA C., ANTHONY M., TORRES J. A. 2012. Shell shapes of the Chinese Pond Mussel *Sinanodonta woodiana* (Lea, 1834) from Lawis Stream in Iligan City and Lake Lanao in Mindanao, Philippines. *Advances in Environmental Biology* 6: 1468–1473.
- DOBLER A. H., HOOS P., GEIST J. 2022. Distribution and potential impacts of non-native Chinese pond mussels *Sinanodonta woodiana* (Lea, 1834) in Bavaria, Germany. *Biological Invasions* 24: 1689–1706.  
<https://doi.org/10.1007/s10530-022-02737-2>
- DOUDA K., VRTÍLEK M., SLAVÍK O., REICHARD M. 2012. The role of host specificity in explaining the invasion success of the freshwater mussel *Anodonta woodiana* in Europe. *Biological Invasions* 14: 127–137.  
<https://doi.org/10.1007/s10530-011-9989-7>
- DOUDA K., ZIERITZ A., VODÁKOVÁ B., URBAŇSKA M., BOLOTOV I. N., MARKOVÁ J., FROUFE E., BOGAN A. E., LOPES-LIMA M. 2024. Review of the globally invasive freshwater mussels in the genus *Sinanodonta* Modell, 1945. *Hydrobiologia* (2024).  
<https://doi.org/10.1007/s10750-023-05457-3>
- DUDGEON D., MORTON B. 1983. The population dynamics and sexual strategy of *Anodonta woodiana* (Bivalvia: Unionacea) in Plover Cove Reservoir, Hong Kong. *Journal of Zoology* 201: 161–183.  
<https://doi.org/10.1111/j.1469-7998.1983.tb04268.x>
- GAAGAI A. 2017. Etude de l'évolution de la qualité des eaux du barrage de Babar (Sud-Est Algérie) et l'impact de la rupture de la digue sur l'environnement. Unpublished Ph.D. thesis, University of Mostefa Benboulaïd, Batna, Algeria.
- GAAGAI A., BOUDOUKHA A., BENAABIDATE L. 2020a. Failure simulation of Babar dam – Algeria and its impact on the valley downstream section. *Journal of Water and Land Development* 44: 75–89.  
<https://doi.org/10.24425/jwld.2019.127048>
- GAAGAI A., AOUISSI H., MAALAM S., ABABSA M. 2020b. Impact of Climate Change and Anthropogenic Activity on the Water Quality of Babar Dam in Algeria. *Global Journal of Engineering Sciences* 6: 1–8.  
<https://doi.org/10.33552/GJES.2020.06.000643>
- GEIST J., BENEDICT A., DOBLER A. H., HOESS R., HOOS P. 2023. Functional interactions of non-native aquatic fauna with European freshwater bivalves: implications for management. *Hydrobiologia*.  
<https://doi.org/10.1007/s10750-022-05121-2>
- GIRARDI H., LEDOUX J. C. 1989. Présence d'*Anodonta woodiana* (Lea) en France (Mollusques Lamellibranches Unionidae). *Bulletin mensuel de la Société Linnéenne de Lyon* 58: 286–290.  
<https://doi.org/10.3406/linly.1989.10899>
- GUARNERI I., POPA O. P., GOLA L., KAMBURSKA L., LAUCERI R., POPA L. O., RICCARDI N. 2014. A morphometric and genetic comparison of *Sinanodonta woodiana* (Lea, 1834) populations: does shape really matter? *Aquatic Invasions* 9: 183–194.  
<https://doi.org/10.3391/ai.2014.9.2.07>
- HUBER V., GEIST J. 2019. Reproduction success of the invasive *Sinanodonta woodiana* (Lea 1834) in relation to native mussel species. *Biological Invasions* 21: 3451–3465.  
<https://doi.org/10.1007/s10530-019-02060-3>
- KAMBURSKA L., LAUCERI R., RICCARDI N. 2013. Establishment of a new alien species in Lake Maggiore (Northern Italy): *Anodonta* (*Sinanodonta*) *woodiana* (Lea, 1834) (Bivalvia: Unionidae). *Aquatic Invasions* 8: 111–116.  
<https://doi.org/10.3391/ai.2013.8.1.13>



- KARA H. M. 2012. Freshwater fish diversity in Algeria with emphasis on alien species. *European Journal of Wildlife Research* 58: 243–253.  
<https://doi.org/10.1007/s10344-011-0570-6>
- KARAOUZAS I., GONÇALVES D. V., RICCARDI N., VARANDAS S., FROUFE E., ZOGARIS S., LOPES-LIMA M. 2022. First established population of the Chinese pond mussel *Sinanodonta woodiana* (Lea, 1834) (Bivalvia: Unionidae) in Greece. *BioInvasions Records* 11: 165–172.  
<https://doi.org/10.3391/bir.2022.11.1.16>
- KHELIFI N., BOUCENNA I., BOUALLEG C., KAOUACHI N., SAHTOUT F., BENSOUILLAH M. 2018. Étude de la croissance du carassin commun *Carassius carassius* (Linnaeus, 1758) du barrage Beni Haroun (Mila, Algérie). *Bulletin de la Société zoologique de France* 143: 213–226.
- KISS A. 1995. The propagation, growth and biomass of the Chinese huge mussel (*Anodonta woodiana woodiana* 1834) in Hungary. University of Agricultural Sciences of Godollo, Hungary: Privat Edition, Second Ed.
- KONDAKOV A. V., BESPALAYA Y. V., VIKHREV I. V., KONOPLEVA E. S., GOFAROV M. Y., TOMILOVA A. A., VINARSKI M. V., BOLOTOV I. N. 2020a. The Asian pond mussels rapidly colonize Russia: successful invasions of two cryptic species to the Volga and Ob rivers. *BioInvasions Records* 9: 504–518.  
<https://doi.org/10.3391/bir.2020.9.3.07>
- KONDAKOV A. V., KONOPLEVA E. S., VIKHREV I. V., BESPALAYA Y. V., GOFAROV M. Y., KABAKOV M. V., TOMILOVA A. A., VINARSKI M. V., BOLOTOV I. N. 2020b. Phylogeographic affinities, distribution and population status of the non-native Asian pond mussels *Sinanodonta lauta* and *S. woodiana* in Kazakhstan. *Ecologica Montenegrina* 27: 22–34.  
<https://doi.org/10.37828/em.2020.27.3>
- KONDAKOV A. V., PALATOV D. M., RAJABOV Z. P., GOFAROV M. Y., KONOPLEVA E. S., TOMILOVA A. A., VIKHREV I. V., BOLOTOV I. N. 2018. DNA analysis of a non-native lineage of *Sinanodonta woodiana* species complex (Bivalvia: Unionidae) from Middle Asia supports the Chinese origin of the European invaders. *Zootaxa* 4462: 511–522.  
<https://doi.org/10.11646/zootaxa.4462.4.4>
- KONEČNÝ A., POPA O. P., BARTÁKOVÁ V., DOUDA K., BRYJA J., SMITH C., POPA L. O., REICHARD M. 2018. Modelling the invasion history of *Sinanodonta woodiana* in Europe: Tracking the routes of a sedentary aquatic invader with mobile parasitic larvae. *Evolutionary Applications* 11: 1975–1989.  
<https://doi.org/10.1111/eva.12700>
- KOUSSA M., BOUZIANE M. T. 2019. Estimation des paramètres de l'érosion hydrique par Approche SIG/USLE : cas du bassin versant de l'Oued Arab (région de Khenchela, Nord-Est de l'Algérie). *Agriculture and Forestry Journal* 3: 36–45.  
<https://doi.org/10.5281/zenodo.3239252>
- KRASZEWSKI A. 2006. Morphological variation in the Chinese clam *Sinanodonta woodiana* (Lea, 1834) in the heterogeneous conditions of the Konin heated lake system in central Poland. *Folia Malacologica* 14: 11–23.  
<https://doi.org/10.12657/folmal.014.002>
- KRASZEWSKI A. 2007. The continuing expansion of *Sinanodonta woodiana* (Lea, 1834) (Bivalvia: Unionidae) in Poland and Europe. *Folia Malacologica* 15: 65–69.  
<https://doi.org/10.12657/folmal.015.007>
- KRASZEWSKI A., ZDANOWSKI B. 2001. The distribution and abundance of the Chinese mussel *Anodonta woodiana* (Lea, 1834) in the heated Konin Lakes. *Archives of Polish Fisheries* 9: 253–265.
- KRASZEWSKI A., ZDANOWSKI B. 2007. *Sinanodonta woodiana* (Lea, 1834) (Mollusca) – a new mussel species in Poland: occurrence and habitat preferences in a heated lake system. *Polish Journal of Ecology* 55: 337–356.
- LABECKA A. M., CZARNOLESKI M. 2021. Patterns of growth, brooding and offspring size in the invasive mussel *Sinanodonta woodiana* (Lea, 1834) (Bivalvia: Unionidae) from an anthropogenic heat island. *Hydrobiologia* 848: 3093–3113.  
<https://doi.org/10.1007/s10750-019-04141-9>
- LABECKA A. M., DOMAGALA J. 2018. Continuous reproduction of *Sinanodonta woodiana* (Lea, 1824) females – an invasive mussel species in a female-biased population. *Hydrobiologia* 810: 57–76.  
<https://doi.org/10.1007/s10750-016-2835-2>
- LAJTNER J., CRNČAN P. 2011. Distribution of the invasive bivalve *Sinanodonta woodiana* (Lea, 1834) in Croatia. *Aquatic Invasions* 6: S119–S124.  
<https://doi.org/10.3391/ai.2011.6.s1.027>
- MABROUKI Y., TAYBI A. F. 2022. The first record of the invasive Chinese pond mussel *Sinanodonta woodiana* (Lea, 1834) (Bivalvia: Unionidae) in the African continent. *Natura Croatica* 31: 393–398.  
<https://doi.org/10.20302/nc.2022.31.28>
- MEDDOUR A., MEDDOUR-BOUDERDA K., ZOUAKH D. E., SOUMATI B., MEHENAOU S. 2010. Les pathologies transfrontalières de la filière pisciculture en Algérie. Proceedings of the 2nd International Colloquium on Biodiversity & Coastal Ecosystem, BEL2, INOCLRSE, 28–30 November 2010 Oran, Algeria, Edited by Choukhi, A., Inter Islamic Science & Technology Network on Oceanography, 2010, Izmir, Turkey: pp. 37–45.
- MEDDOUR A., ROUABAH A., MEDDOUR-BOUDERDA K., LOUCIF N., REMILIA., KHATAL Y. 2005. Experimentations sur la reproduction artificielle de *Sander lucioperca*, *Hypophthalmichthys molitrix* et *Aristichthys nobilis* en Algérie. *Sciences & Technologie C* 23: 63–71.
- MEHLER K., LABECKA A. M., SÎRBU I., FLORES N. Y., LEUVEN R. S. E. W., COLLAS F. P. L. 2024. Recent and future distribution of the alien Chinese pond mussel *Sinanodonta woodiana* (Lea, 1834) on the European continent. *Aquatic Invasions* 19: 51–72.  
<https://doi.org/10.3391/ai.2024.19.1.114856>
- NAJBEREK K., STRZAŁKA M., SOLARZ W. 2011. Alien *Sinanodonta woodiana* (Lea, 1834) and protected *Anodonta cygnea* (Linnaeus, 1758) (Bivalvia: Unionidae) in the Spytkowice pond complex. *Folia Malacologica* 19: 31–33.  
<https://doi.org/10.2478/v10125-011-0011-x>
- PAGANELLI D., KAMBURSKA L., ZAUPA S., GARZOLI L., BOGGERO A. 2021. Impacts analysis of alien macroin-



- vertebrate species in the hydrographic system of a sub-alpine lake on the Italian–Swiss border. *Water* 13: 3146. <https://doi.org/10.3390/w13213146>
- POPA O. P., KELEMEN B. S., MURARIU D., POPA L. O. 2007. New records of *Sinanodonta woodiana* (Lea, 1834) (Mollusca: Bivalvia: Unionidae) from Eastern Romania. *Aquatic Invasions* 2: 265–267. <https://doi.org/10.3391/ai.2007.2.3.12>
- SÁRKÁNY-KISS A., SÎRBU I., HULEA O. 2000. Expansion of the adventive species *Anodonta woodiana* (Lea, 1834) (Mollusca, Bivalvia, Unionoidea) in central and eastern Europe. *Acta Oecologica* 7: 49–57.
- SERIDI F. 2011. L'aquaculture en Algérie: évolution, état actuel et essai d'analyse de durabilité. PhD Thesis, University of Badji Mokhtar, Annaba, Algeria.
- SOROKA M. 2000. Age structure and sex ratio of *Anodonta woodiana* (Lea, 1834) (Bivalvia: Unionidae) from Konin reservoirs (C Poland). *Folia Malacologica* 8: 239–244. <https://doi.org/10.12657/folmal.008.019>
- SOUSA R., NOVAIS A., COSTA R., STRAYER D. L. 2014. Invasive bivalves in fresh water: impacts from individuals to ecosystem and possible control strategies. *Hydrobiologia* 73: 233–251. <https://doi.org/10.1007/s10750-012-1409-1>
- SPYRA A., JĘDRASZEWSKA N., STRZELEC M., KRODKIEWSKA M. 2016. Further expansion of the invasive mussel *Sinanodonta woodiana* (Lea, 1834) in Poland – establishment of a new locality and population features. *Knowledge and Management of Aquatic Ecosystems* 417: 41. <https://doi.org/10.1051/kmae/2016028>
- SPYRA A., STRZELEC M., LEWIN I., KRODKIEWSKA M., MICHALIK-KUCHARZ A., GARA M. 2012. Characteristics of *Sinanodonta woodiana* (Lea, 1834) populations in fish ponds (Upper Silesia, Southern Poland) in relation to environmental factors. *International Review of Hydrobiology* 97: 12–25. <https://doi.org/10.1002/iroh.201111425>
- TEBBI F. Z., DRIDI H., KALLA M. 2018. Performance analysis of a reservoir in arid region. Case study: Babar reservoir, Aurès region, Algeria. *Journal of Water and Land Development* 39: 141–146. <https://doi.org/10.2478/jwld-2018-0069>
- ULMAN A., FERRARIO J., OCCHPINTI-AMBROGI A., ARVANITIDIS C., BANDI A., BERTOLINO M., BOGI C., CHATZIGEORGIOU G., ÇİÇEK B. A., DEIDUN A., RAMOS-ESPLÁ A., KOÇAK C., LORENTI M., MARTINEZ-LAIZ G., MERLO G., PRINCISGH E., SCRIBANO G., MARCHINI A. 2017. A massive update of non-indigenous species records in Mediterranean marinas. *PeerJ* 5: e3954. <https://doi.org/10.7717/peerj.3954>
- URBAŃSKA M., KAMOCKI A., KIRSCHENSTEIN M., OZGO M. 2021. The Chinese pond mussel *Sinanodonta woodiana* demographically outperforms European native mussels. *Scientific Reports* 11: 17058. <https://doi.org/10.1038/s41598-021-96568-1>
- URBAŃSKA M., LAKOMY A., ANDRZEJEWSKI W., MAZUR-KIEWICZ J. 2012. The story of one clam. Probably the oldest location of the Chinese pond mussel *Sinanodonta woodiana* (Lea, 1834) (Bivalvia, Unionidae) in Poland. *Oceanological and Hydrobiological Studies* 41: 41–45. <https://doi.org/10.2478/s13545-012-0005-3>
- VIARD F., DAVID P., DARLING J. 2016. Marine invasions enter the genomic era: three lessons from the past, and the way forward. *Current Zoology* 62: 629–642. <https://doi.org/10.1093/cz/zow053>
- WATTERS G. T. 1997. A synthesis and review of the expanding range of the Asian freshwater mussel *Anodonta woodiana* (Lea, 1834) (Bivalvia: Unionidae). *Veliger* 40: 152–156.
- ZIERITZ A., GUM B., KUEHN R., GEIST J. 2012. Identifying freshwater mussels (Unionoida) and parasitic glochidia larvae from host fish gills: A molecular key to the North and Central European species. *Ecology and Evolution* 2: 740–750. <https://doi.org/10.1002/ece3.220>

Received: May 19th, 2024

Revised: August 4th / September 28th, 2024

Accepted: October 4th, 2024

Published on-line: November 20th, 2024

